

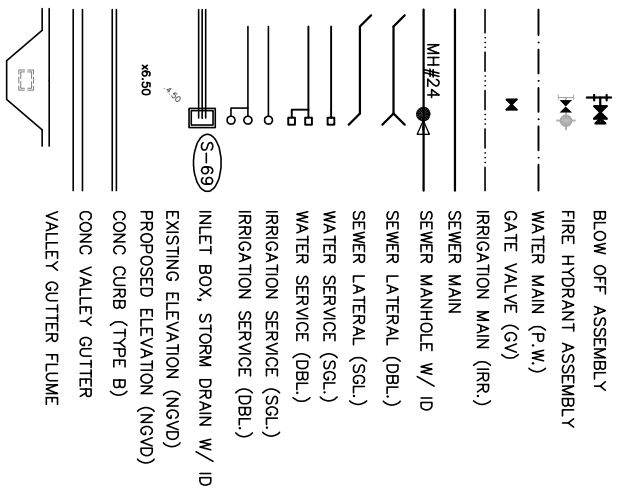
GENERAL CONSTRUCTION NOTES

1. REFER TO CONTRACT DOCUMENTS AND TECHNICAL SPECIFICATIONS FOR ADDITIONAL INFORMATION, CONTRACTOR'S RESPONSIBILITIES AND DETAIL.
2. THE CONTRACTOR SHALL BE REQUIRED TO MEET ALL "MAINTENANCE OF TRAFFIC" REQUIREMENTS AS PRESCRIBED IN THE CURRENT "STANDARD SPECIFICATIONS FOR ROAD AND BRIDGE CONSTRUCTION," F.H.W.A. MANUAL ON UNIFORM TRAFFIC CONTROL DEVICES, PART "I," CURRENT EDITION, AND ALL APPLICABLE SECTIONS OF THE ROAD AND TRAFFIC DESIGN STANDARDS, FLORIDA DEPARTMENT OF TRANSPORTATION, CURRENT EDITION.
3. THE CONTRACTOR SHALL COMPLY WITH CURRENT FLORIDA DEPARTMENT OF TRANSPORTATION (FDOT) SPECIFICATIONS. SPECIFICALLY IN ACCORDANCE WITH THE CURRENT EDITIONS OF THE "SPECIFICATIONS FOR ROAD BRIDGE CONSTRUCTION" AND THE "ROAD AND TRAFFIC DESIGN STANDARDS", UNLESS OTHERWISE NOTED.
4. THERE ARE NO KNOWN WELLS LOCATED ON THIS JOB SITE. IF ANY WELLS ARE LOCATED DURING CONSTRUCTION THE CONTRACTOR IS RESPONSIBLE TO NOTIFY THE ENGINEER.
5. ALL PRACTICABLE AND NECESSARY EFFORT SHALL BE TAKEN DURING CONSTRUCTION TO CONTROL AND PREVENT EROSION AND TRANSPORT OF SEDIMENT TO SURFACE DRAINS, SWALES AND OUTFALLS. (REFER TO EROSION CONTROL PLAN)
6. BENCH MARK DATUM IS NATIONAL GEODETIC VERTICAL DATUM OF 1929 (N.G.V.D. 1929).
7. EXTENDED HAUL DISTANCE PERTAINING TO SEQUENCE OF GRADING OPERATIONS WILL BE THE RESPONSIBILITY OF THE CONTRACTOR AND NO ADDITIONAL COMPENSATION WILL BE MADE.
8. ANY SURPLUS MATERIAL WILL REMAIN THE PROPERTY OF THE OWNER. AND THE CONTRACTOR AT HIS EXPENSE SHALL STOCKPILE THE SURPLUS MATERIAL AS DIRECTED BY OWNER.
9. ALL UTILITY WORKMANSHIP AND MATERIALS FOR THIS PROJECT SHALL BE IN STRICT ACCORDANCE WITH THE SPECIFICATIONS AND STANDARDS OF THE DEPARTMENT OF ENVIRONMENTAL PROTECTION (DEP), THE STATE (HRS), AND THE CITY OF CAPE CORAL UTILITY DIVISION, UNLESS OTHERWISE NOTED.
10. IT IS THE CONTRACTOR'S RESPONSIBILITY TO LOCATE AND VERIFY THE SIZE, DEPTH AND LOCATION OF ALL UTILITIES IN THE FIELD WITHIN THE PROJECT LIMITS PRIOR TO CONSTRUCTION. ANY UTILITIES THAT ARE DISTURBED OR DAMAGED BY THE CONTRACTOR SHALL BE IMMEDIATELY REPAIRED OR REPLACED AT HIS EXPENSE. ANY DISCREPANCY NOT CALLED TO THE ENGINEER'S ATTENTION PRIOR TO THE ACCOMPLISHMENT OF THE WORK SHALL BE CORRECTED AT THE CONTRACTOR'S EXPENSE. THE ENGINEER AND/OR OWNER WILL NOT GUARANTEE ANY LOCATIONS AS SHOWN ON THESE PLANS OR THOSE OMITTED FROM THE SAME.
11. ALL DISTURBED AREAS WITHIN PROJECT SITE AND CITY R/W'S SHALL BE REPAIRED AS REQUIRED AND STABILIZED WITH SOD. LOT FILL AREAS SHALL BE SEEDED AND MULCHED.
12. CONCRETE SIDEWALK: USE CLASS 1, 3000 PSI (MINIMUM) CONCRETE. APPLY A BROOM FINISH AND MAKE VERTICAL SAW CUTS AT 5' ON CENTER AT A DEPTH OF 1/4" OF THE SLAB THICKNESS. PROVIDE PRE-FORMED EXPANSION JOINTS AT 50' ON CENTER.
13. ALL HANDICAP SPACES, RAMPS, AND ACCESS AREAS SHALL COMPLY IN STRICT ACCORDANCE WITH THE "AMERICAN DISABILITY ACT" (ADA) (28 CFR PART 36), AND "ACCESSIBILITY FOR HANDICAPPED PERSONS" CHAPTER 553, PART V, FLORIDA STATUTES. ANY DISCREPANCY SHALL BE CALLED TO THE ENGINEER'S ATTENTION PRIOR TO CONSTRUCTION.
14. CONCRETE CURB & GUTTER AND STRAIGHT CURB: USE CLASS 1, 3000 PSI (MINIMUM) CONCRETE. MAKE VERTICAL SAW CUTS EVERY 10' ON CENTER WITH PRE-MOLDED EXPANSION JOINTS EVERY 50' ON CENTER.
15. PAVEMENT MARKINGS AND SIGNS SHALL BE IN STRICT ACCORDANCE WITH THE "MANUAL ON UNIFORM TRAFFIC CONTROL DEVICES FOR STREETS AND HIGHWAYS" AND FOOT STANDARD INDEX #17346.
16. STORM DRAIN (SD) SHALL BE REINFORCED CONCRETE PIPE, ADS N-12, ALUMINUM, PVC SDR-35, A-2000 PVC, OR AS SHOWN ON PLANS. NO STEEL PIPE OR NON REINFORCED CONCRETE PIPE.
17. THE CONTRACTOR SHALL SUBMIT TO THE ENGINEER SHOP DRAWINGS OF ANY AND ALL MATERIALS, STRUCTURES, PIPING, VALVES, VALVE BOXES, ETC, TO BE USED ON SITE PRIOR TO ORDERING OR INSTALLING, INCLUDING MFG. OF SAME.

GENERAL UTILITY NOTES

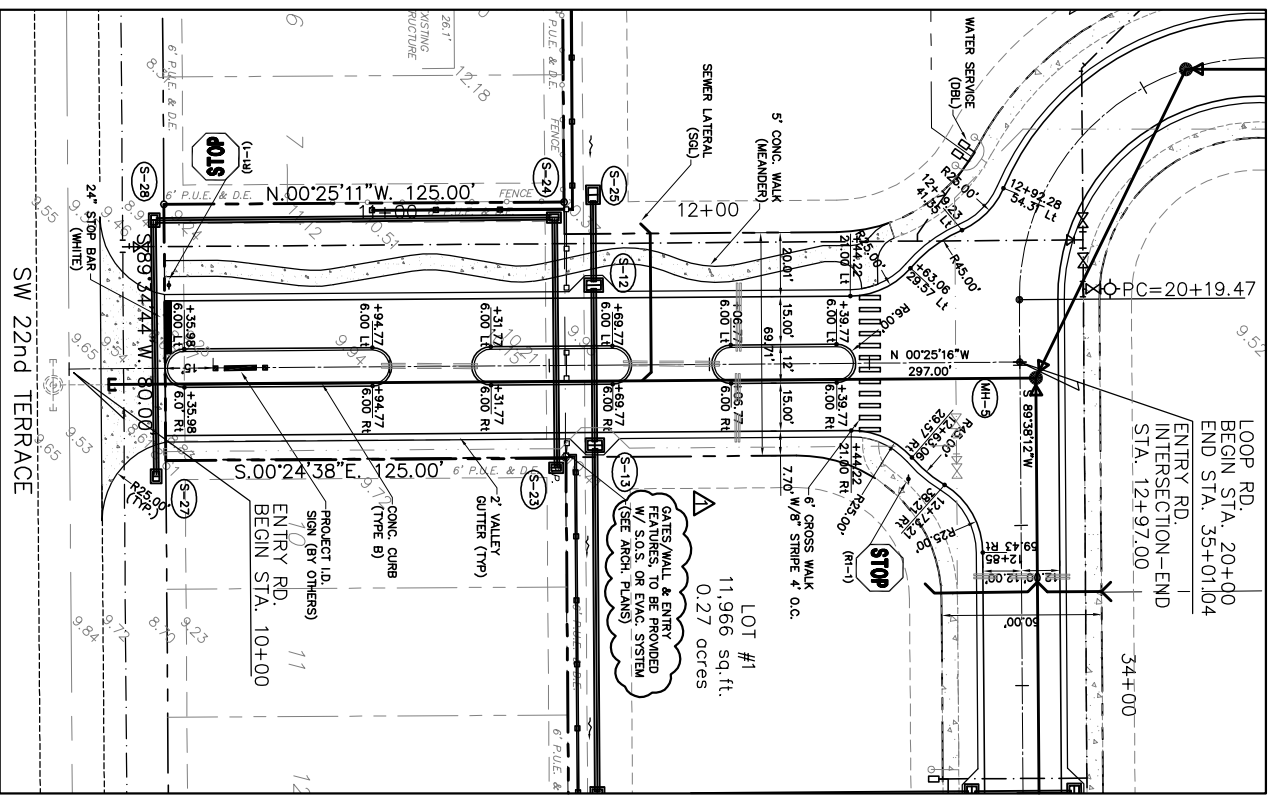
1. ALL WATER, SEWER AND IRRIGATION CONSTRUCTION SHALL CONFORM TO THE CITY OF CAPE CORAL STANDARD DETAILS AND SPECIFICATIONS; AND THE SOUTHERN STANDARD PLUMBING CODE.
2. WATER AND IRRIGATION PIPE SMALLER THAN 2" SHALL BE POLYVINYL CHLORIDE (PVC) AND SHALL CONFORM TO ASTM D-1785, CLASS 1120 OR 1220, SCHEDULE 80 PVC. WATER AND IRRIGATION PIPE 2" BUT LESS THAN 4" IN DIAMETER SHALL BE PVC CLASS 200, DR-21 CONFORMING TO ASTM 2241 WITH RING-TYPE JOINTS. WATER AND IRRIGATION PIPE 4" INCHES, UP TO AND INCLUDING 12" INCHES IN DIAMETER SHALL BE AWWA C-900, CLASS 150, DR-18. AT THE CONTRACTOR'S OPTION, WATER AND IRRIGATION PIPE MAY BE CLASS 51 DUCTILE IRON PIPE, CONFORMING TO ANSI/AWWA A21.51/C151. ALL MAINS UP TO 12" IN DIAMETER SHALL HAVE 30" MINIMUM COVER FROM FINISHED GRADE.
3. THE CONTRACTOR SHALL UTILIZE RESTRAINED JOINTS FOR THE INSTALLATION OF WATER, FORCE MAIN AND IRRIGATION PIPING.
4. GRAVITY SEWER PIPE 4" IN DIAMETER AND GREATER SHALL BE PVC AND SHALL CONFORM TO ASTM D-3034, SDR 26. 36 INCH MINIMUM COVER, UNLESS OTHERWISE SHOWN.
5. INSTALLATION OF SERVICE METERS AND CONNECTIONS TO EXISTING CITY OF CAPE CORAL UTILITIES SHALL BE PERFORMED BY AND COORDINATED WITH THE CITY OF CAPE CORAL UTILITY DEPARTMENT AT THE CONTRACTOR'S EXPENSE. THE LOCATION OF THE CONNECTION POINTS MAY REQUIRE FIELD ADJUSTMENT TO BE PERFORMED AT THE CONTRACTOR'S EXPENSE. IMPACT FEES SHALL BE PAID BY THE OWNER.
6. WHERE WATER, IRRIGATION AND SEWER MAINS CROSS, THE MINIMUM VERTICAL SEPARATION SHALL BE 18 INCHES. WHERE THIS IS NOT POSSIBLE, THE WATER MAIN SHALL BE ENCASED IN A PVC SLEEVE OR THE JOINTS SHALL BE SEPARATED TEN (10) FEET EITHER SIDE OF THE POINT OF CROSSING. THE CONTRACTOR SHALL COMPLY WITH RULE 62-555.345 FAC. AND SHALL INCLUDE THE COSTS FOR DEFLECTING PIPE, ROLL-DOWNS OR ENCASEMENT IN THE PRICE OF THE PIPE.
7. TESTING AND COMPACTION OF TRENCH BACKFILL, SUBGRADE, AND BASE SHALL BE IN ACCORDANCE WITH THE STANDARD SPECIFICATIONS.
8. ALL UTILITY PIPING, INCLUDING SERVICES, SHALL BE COLOR CODED AS FOLLOWS:
SEWER - GREEN
IRRIGATION/FIRE - LAVENDER
9. ALL WATER, SEWER, IRRIGATION, FORCE MAINS, SERVICES AND LATERALS SHALL HAVE DETECTABLE TAPE INSTALLED OVER THE PIPE WITH 12" MINIMUM TO 18" MAXIMUM COVER FROM PROPOSED GRADE.
10. WATER, FIRE AND IRRIGATION SERVICES MAY BE WHITE IN COLOR, BUT IN ADDITION, SHALL BE WRAPPED WITH THE CORRECT COLOR TAPE. NO GRAY PIPE SHALL BE PERMITTED FOR WATER, FIRE AND IRRIGATION MAINS OR SERVICES.
11. WATER, FIRE AND IRRIGATION MAINS, INCLUDING SERVICES, SHALL BE FLUSHED AND PRESSURE TESTED IN ACCORDANCE WITH AWWA C-600. THE UTILITY COMPANY AND ENGINEER SHALL BE PRESENT DURING THE TESTING.
12. WATER MAINS AND SERVICES SHALL BE DISINFECTED AND TESTED IN ACCORDANCE AWWA C-651 AND RULE 62-555.345 FAC, INCLUDING PROVIDING SAMPLE POINTS AS REQUIRED BY THE HEALTH DEPARTMENT.
13. ALL FRAMES, COVERS, VALVE BOXES, METER BOXES AND MANHOLES SHALL BE ADJUSTED TO FINISHED GRADE UPON COMPLETION OF PAVING OR RELATED CONSTRUCTION.
14. ANY WORK OR MATERIALS WHICH DO NOT CONFORM TO THE SPECIFICATIONS OR ANY WORK PERFORMED WITHOUT THE KNOWLEDGE OF THE CAPE CORAL UTILITY INSPECTORS OR REPRESENTATIVES IS SUBJECT TO REMOVAL AND REPLACEMENT OF SAME TO BE COMPLETED AT THE CONTRACTOR'S EXPENSE.
15. THE CONTRACTOR SHALL BE RESPONSIBLE FOR NOTIFYING ALL AFFECTED UTILITIES IN THE AREA 72 HOURS PRIOR TO BEGINNING CONSTRUCTION. IT SHALL BE THE CONTRACTOR'S RESPONSIBILITY TO COORDINATE WITH ALL UTILITY COMPANIES AND THE ENGINEER TO RESOLVE CONFLICTS WITH EXISTING UTILITIES IN A TIMELY MANNER TO AVOID DELAYS IN COMPLETING THE PROJECT.
16. ACCEPTANCE OF THE COMPLETED UTILITY SYSTEMS WILL NOT BE GIVEN UNTIL AS-BUILT PLANS HAVE BEEN SUBMITTED AND ACCEPTED BY THE ENGINEER.
17. THERE IS NO EXISTING SANITARY SEWER CURRENTLY AVAILABLE TO SERVICE THIS DEVELOPMENT. UNTIL SUCH TIME AS THE CITY OF CAPE CORAL UTILITY DEPARTMENT INSTALLS SEWER MAINS, EACH DEVELOPED LOT WILL REQUIRE INDIVIDUAL SEPTIC TANKS AND DRAIN FIELDS FOR SEWAGE TREATMENT AND DISPOSAL.

LEGEND:



UTILITY COMPANIES

- SPRINT TELEPHONE**
P.O. Box 1370, Fort Myers, FL 33901
(239) 335-3111
- LEE COUNTY ELECTRIC COOPERATIVE, INC.**
4980 BAYLINE DR., N. FT. MYERS, FL. 33917
(239) 656-2300
- CITY OF CAPE CORAL / UTILITIES DEPARTMENT**
P.O. Box 150027, Cape Coral, FL 33915-0027
(239) 574-0854
- TIME-WARNER CABLE**
1418 SE 10th Street, Cape Coral, FL 33990
(239) 574-2020
- KIMMINGS RECYCLING (C.C. DISTRICT)**
17101 PINE RIDGE RD. FT. MYERS BEACH FL. 33931
(239) 437-1994



ENTRY ROAD DETAIL #3

Scale: 1"=30'

PROJ.: 02-113	DATE: 5/28/02
CADD TECH: C.M.	
PROJ. MGR.: Bill Edwards, P.E.	
FL. REG. NUM.: #38615	

DATE	BY	REVISION DESCRIPTION
12/6/02	CM	P.R.T. COMMENTS
1/16/03	CM	2-27 SFRM COMMENTS
1/17/03	CM	2-27 SFRM COMMENTS
3/22/04	RE	RECORD DRAWINGS PER CONTRACTOR MARK-UPS
8/27/04	RE	6" PERIMETER WALL (BY OTHERS)

AVALON ENGINEERING, INC.
2503 DEL PRADO BLVD. #200
CAPE CORAL, FLORIDA 33904
FBPE #3128 (239) 573-2077

DEVELOPER
PALMETTO PINE DEVELOPMENT, LLC.
1386 CAPE CORAL PALMWAY
CAPE CORAL, FLORIDA 33904

PALMETTO PINES OF CAPE CORAL
PORTION OF TRACT "A" - LOTS 8 & 9
BLOCK 4397 - UNIT 63
CAPE CORAL, FLORIDA

GENERAL NOTES AND LEGEND