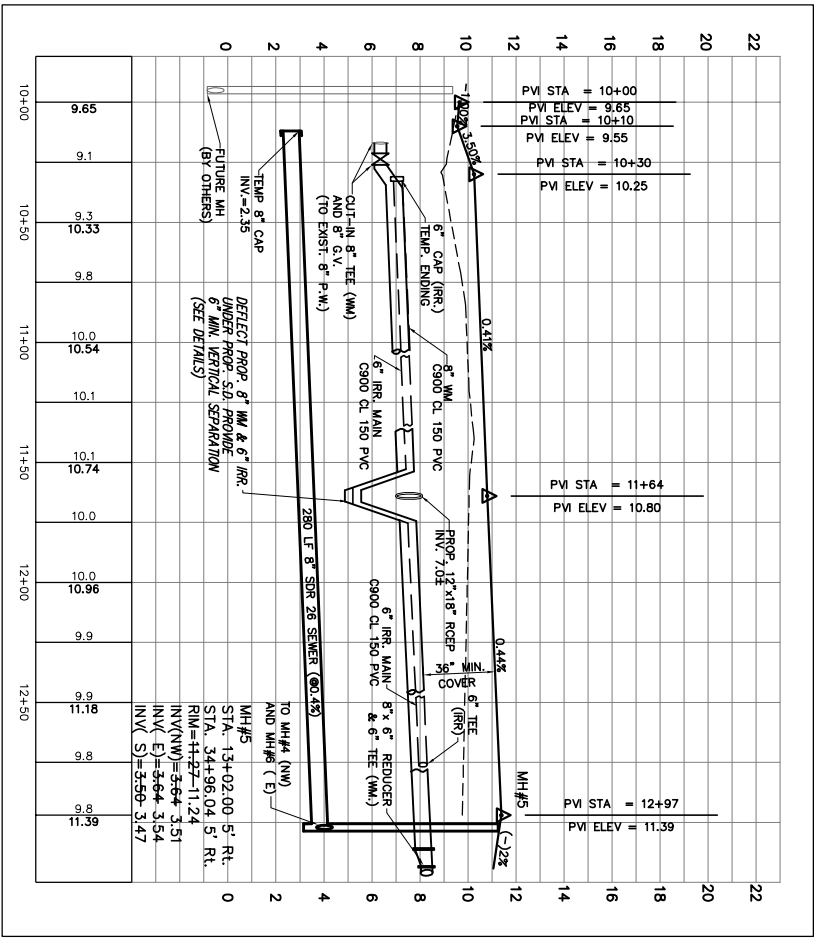
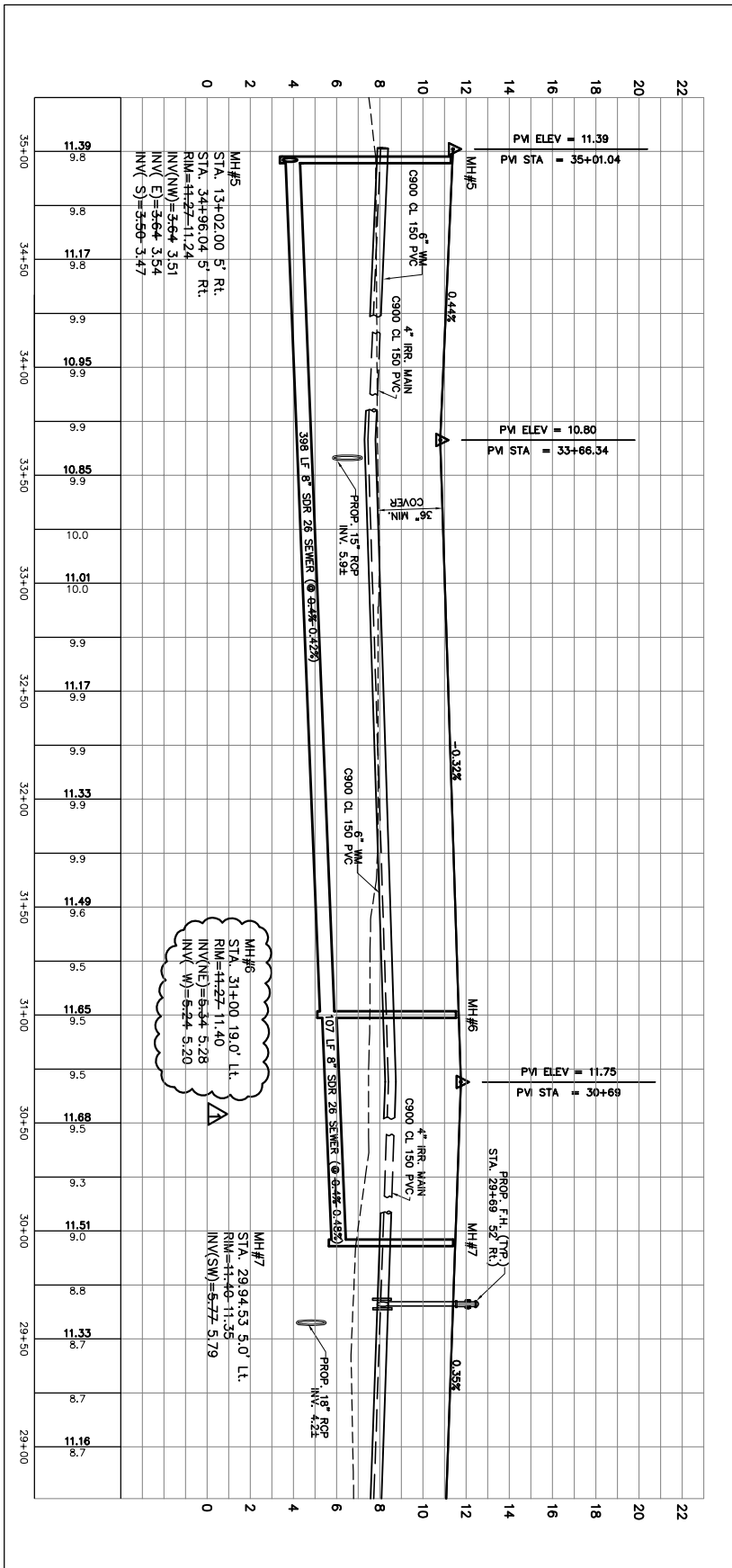


**PROFILES MH#1 THRU MH#5**  
Scale: 1"=40' (HORZ)  
1"=4' (VERT)

**NOTE**  
CONTRACTOR SHALL UTILIZE BENDS AS REQUIRED FOR WATER MAIN TO BE CONSTRUCTED. HORIZONTAL DEFLECTIONS SHALL NOT EXCEED 80% OF MANUFACTURER'S RECOMMENDED DEFLECTION LIMITS.



**PROFILES MH#5 TO TEMP END**  
Scale: 1"=40' (HORZ)  
1"=4' (VERT)



**PROFILES MH#5 THRU MH#7**  
Scale: 1"=40' (HORZ)  
1"=4' (VERT)

DATE	BY	REVISION DESCRIPTION
12/6/02	BE	P.R.T. COMMENTS
1/16/03	CM	S.F.M.D. COMMENTS
1/17/03	BE	RECORD DRAWINGS PER CONTRACTOR MARK-UPS
3/22/04	BE	RECORD DRAWINGS PER CONTRACTOR MARK-UPS
8/27/04	BE	6" PERIMETER WALL (BY OTHERS)

PROJ.: 02-113	DATE: 5/28/02
CADD TECH. C.M.	
PROJ. MGR. Bill Edwards, P.E.	
FL. REG. NUM. #38615	

**AVALON ENGINEERING, INC.**  
2503 DEL PRADO BLVD. #200  
CAPE CORAL, FLORIDA 33904  
FBPE#3128 (239) 573-2077

DEVELOPER  
**PALMETTO PINE DEVELOPMENT, LLC.**  
1386 CAPE CORAL PALMWAY  
CAPE CORAL, FLORIDA 33904

**PALMETTO PINES OF CAPE CORAL**  
PORTION OF TRACT "A" - LOTS 8 & 9  
BLOCK 4397 - UNIT 63  
CAPE CORAL, FLORIDA

**UTILITY PROFILES**