

DRAINAGE STRUCTURES

(S-1) STA. 28+20.20 192.0' Lt.
CONST. CONTROL STRUCTURE #1
(MODIFIED TYPE "E" INLET -
SEE DETAIL)
SWALE GRATE=14+00-11.03
SLOT (S) EL.=7+00-7.04
INV(N)=6+00-
SUMP=4+00-4.70

(S-2) STA. 30+81.90 232.5' Lt.
CONST. CONTROL STRUCTURE #2
(MODIFIED TYPE "E" INLET -
SEE DETAIL)
SWALE GRATE=14+00-10.97
SLOT(N/W)=7.00
INV(SE)=6+00-6.49
SUMP=4+00-4.38

(S-3) STA. 22+05.67 141.0' Rt.
CONST. TYPE "C" INLET
FDOT INDEX #232
SWALE GRATE=10+25-10.38
INV(N)=5+70-5.88
INV(E)=5+60-5.58
SLOT(W)=9+50-9.58*

(S-4) STA. 25+95.95 144.0' Rt.
CONST. TYPE "C" INLET
FDOT INDEX #232
SWALE GRATE=10+25-10.22
INV(N)=5+10-5.11
INV(E)=5+00-5.03
INV(S)=5+10-
SLOT(N,S)=9+50-9.42*

(S-5) STA. 29+57.47 143.0 Rt.
CONST. TYPE "C" INLET
FDOT INDEX #232
SWALE GRATE=10+25-10.23
INV(W)=4+60-4.68
INV(E)=4+50-4.58
SLOT(N,S)=9+50-9.60*

(S-6) STA. 23+56.23 161.59 Lt.
CONST. TYPE "C" INLET
FDOT INDEX #232
SWALE GRATE=10+20-10.21
6" x 24" W. SLOT (E)=8.50
6" x 24" W. SLOT (W)=9+00-9.08
INV(N)=6.60
INV(W)=6+70-6.90
SUMP=4+60-

(S-7) STA. 11+64 135.0 Rt.
CONST. TYPE "C" INLET
FDOT INDEX #232
SWALE GRATE=10+20-10.21
6" x 24" W. SLOT (E)=8.50
6" x 24" W. SLOT (W)=9+00-9.08
INV(N)=6.60
INV(W)=6+70-6.90
SUMP=4+60-

(S-8) STA. 23+56.08 16.0 Lt.
CONST. TYPE "E" INLET
W/ VALLEY GUTTER FLUME
FDOT INDEX #232
PAVT. GRATE=10+27-10.31
INV(N)=6+00-6.72
INV(E)=6+00-6.65

(S-9) STA. 23+56.08 16.0' Rt.
CONST. TYPE "E" INLET
W/ VALLEY GUTTER FLUME
FDOT INDEX #232
PAVT. GRATE=10+27-10.31
INV(N)=6+00-6.72
INV(E)=6+00-6.65

(S-10) STA. 27+97.44 16.0' Lt.
CONST. TYPE "E" INLET
W/ VALLEY GUTTER FLUME
FDOT INDEX #232
PAVT. GRATE=10+27-10.20
INV(SW)=8+10-8.21
INV(SE)=8+10-8.18

(S-11) STA. 27+97.44 16.0' Rt.
CONST. TYPE "E" INLET
W/ VALLEY GUTTER FLUME
FDOT INDEX #232
PAVT. GRATE=10+27-10.28
INV(N)=8+20-8.09

(S-12) STA. 11+64 25.0' Lt.
CONST. TYPE "C" INLET
W/ VALLEY GUTTER FLUME
FDOT INDEX #232
PAVT. GRATE=10+24-10.28
INV(E)=7+40-7.27
INV(W)=7+40-7.33

(S-13) STA. 11+64 25.0' Rt.
CONST. TYPE "C" INLET
W/ VALLEY GUTTER FLUME
FDOT INDEX #232
PAVT. GRATE=10+24-10.30
INV(W)=7+20-7.22
INV(E)=7+10-7.08

(S-14) STA. 33+66.34 16.0' Rt.
CONST. TYPE "E" INLET
W/ VALLEY GUTTER FLUME
FDOT INDEX #232
PAVT. GRATE=10+27-10.47
INV(S)=5+90-6.03
INV(E)=5+00-5.97

(S-15) STA. 33+66.34 16.0' Lt.
CONST. TYPE "E" INLET
W/ VALLEY GUTTER FLUME
FDOT INDEX #232
PAVT. GRATE=10+27-10.36
INV(S)=6+10-6.13
INV(N)=6+00-6.05

(S-16) STA. 24+66.18 16.0' Rt.
CONST. JUNCTION BOX
W/ TYPE "P" BOTTOM
RIM=14+00-10.95
INV(W)=7+40-7.36
INV(S)=7+30-7.26

(S-17) STA. 29+57.47 16.0' Rt.
CONST. JUNCTION BOX
W/ TYPE "P" BOTTOM
RIM=14+00-11.03
INV(W)=4+10-4.07
INV(NE)=4+00-4.21

(S-18) STA. 28+95.23 36.0' Lt.
CONST. TYPE "E" INLET
FDOT INDEX #232
SWALE GRATE=9+30-9.33
8" x 36" W. (NE)=8+00-7.99
INV(SW)=3+60-3.68
SUMP=1+60-1.63

(S-19) STA. 30+82.29 247.67' Lt.
CONST. TYPE "C" INLET
FDOT INDEX #232
SWALE GRATE=10+30-10.35
INV(NW)=6+10-5.82
INV(S)=6.00 (MATCH
EXIST. 18" S.D. INVERT)

(S-20) CONST. TYPE "E" INLET
FDOT INDEX #232
SWALE GRATE=9.70 (MATCH EXIST.)
INV(E)=5.0 (MATCH EXIST. 24" S.D. INVERT)
INV(W)=8.0 (MATCH EXIST. 24" S.D. & 12" x 18" INVERT)
INV(S)=6.20 (PROP. 18" RCP)

(S-21) STA. 28+18.70 200' Lt.
CONST. TYPE "C" INLET
FDOT INDEX #232
SWALE GRATE=10+00-10.01
INV(N)=6+70-6.72
INV(S)=6+00-6.77

(S-22) STA. 25+34.23 145.0' Lt.
CONST. TYPE "C" INLET
FDOT INDEX #232
SWALE GRATE=9.50
INV(N)=6.10 (MATCH EXIST. 18" S.D. INV.)

(S-23) STA. 11+51.93 32.0' Rt.
CONST. TYPE "C" INLET
FDOT INDEX #232
SWALE GRATE=9.87
INV(W)=8+00-8.02

(S-24) STA. 11+51.80 46.0' Lt.
CONST. TYPE "C" INLET
FDOT INDEX #232
SWALE GRATE=9+00-9.84
INV(E)=7+50-7.45
INV(S)=7+00-7.44

(S-25) STA. 11+64 53.0' Lt.
CONST. TYPE "C" INLET
FDOT INDEX #232
SWALE GRATE=9.02
INV(E)=7+50-7.39

(S-26) STA. 28+49.90 35.0' Lt.
CONST. TYPE "C" INLET
FDOT INDEX #232
SWALE GRATE=9+50-9.45
6" x 24" SLOT (E)=8+00-8.46
INV(NW)=7+50-7.47
SUMP=5+50-5.45

(S-27) STA. 10+26 33.7' Rt.
CONST. TYPE "C" INLET
FDOT INDEX #232
SWALE GRATE=9.60
6" x 24" W. SLOT (E)=8.60
INV(W)=7+30-7.32

(S-28) STA. 10+26 46.3' Rt.
CONST. TYPE "C" INLET
FDOT INDEX #232
SWALE GRATE=9+50-9.52
6" x 24" W. SLOT (W)=8+50-8.42
INV(N)=7+00-7.01
INV(E)=7+00-7.05
SUMP=6+00-4.92

(S-29) STA. 33+18.98 16.0' Rt.
CONST. JUNCTION BOX
W/ TYPE "P" BOTTOM
FDOT INDEX #200
RIM=10+25-10.80
INV(N)=8+00-5.25
INV(W)=5+60-5.65

(S-20) CONST. TYPE "E" INLET
FDOT INDEX #232
SWALE GRATE=9.70 (MATCH EXIST.)
INV(E)=5.0 (MATCH EXIST. 24" S.D. INVERT)
INV(W)=8.0 (MATCH EXIST. 24" S.D. & 12" x 18" INVERT)
INV(S)=6.20 (PROP. 18" RCP)

SEWER MANHOLES

MH#1
STA. 27+91.20 7.35' Lt.
RIM=10+72-10.68
INV(W)=7+07-7.00

MH#2
STA. 23+90.32 5.0' Lt.
RIM=10+02-10.90
INV (E)=5+47-5.45
INV(SW)=5+37-5.36

MH#3
STA. 23+08.12 1.23' Lt.
RIM=10+98-10.84
INV(NE)=5+04-5.02
INV (S)=4+94-4.90

MH#4
STA. 21+14.54 0.0' Rt.
RIM=11+70-11.67
INV (N)=4+17-4.04
INV(SE)=4+07-4.02

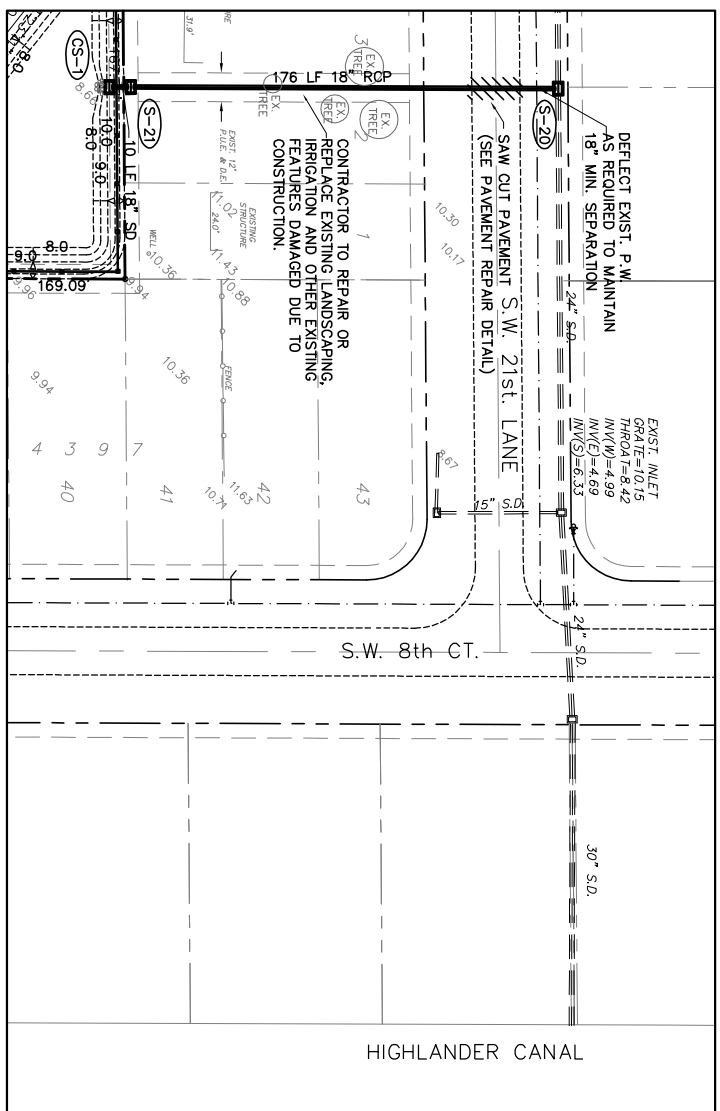
MH#5
STA. 13+02.00 5' Rt.
STA. 34+96.04 5' Rt.
RIM=11+27-11.24
INV(NW)=5+64-5.54
INV (E)=5+64-5.54
INV (S)=5+00-5.47

MH#6
STA. 31+00 19.0' Lt.
RIM=11+27-11.40
INV(NE)=5+34-5.28
INV (W)=5+24-5.20

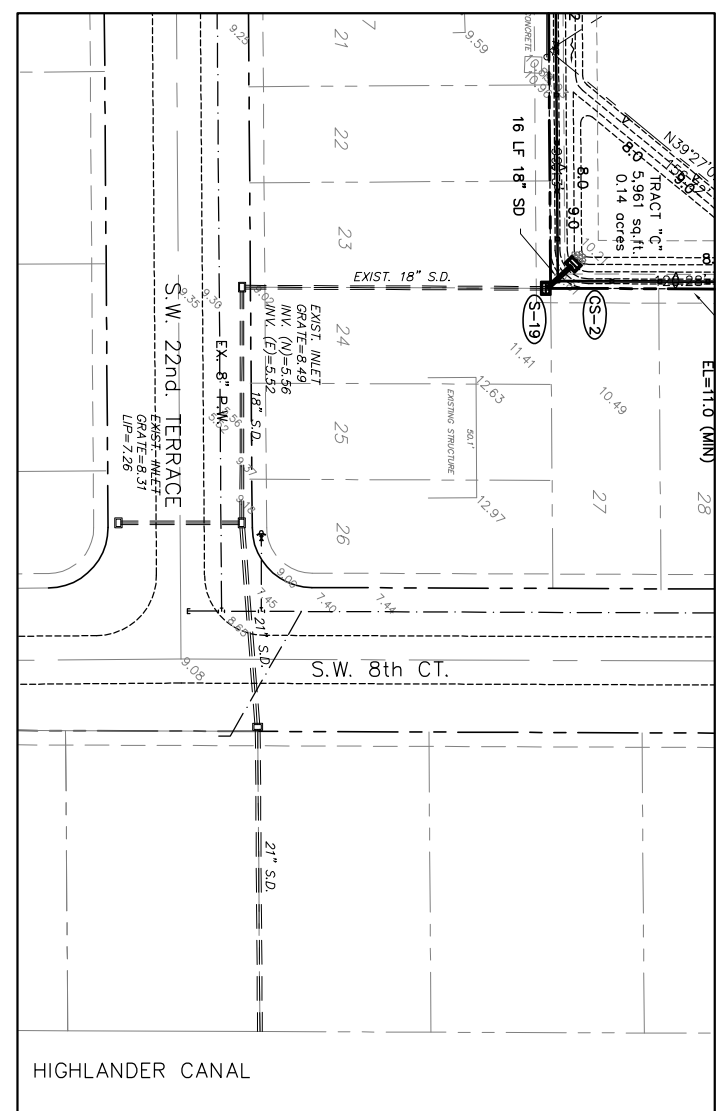
MH#7
STA. 29.94.53 5.0' Lt.
RIM=11+40-11.35
INV(SW)=5+77-5.79

MH#1
STA. 27+91.20 7.35' Lt.
RIM=10+72-10.68
INV(W)=7+07-7.00

MH#1
STA. 27+91.20 7.35' Lt.
RIM=10+72-10.68
INV(W)=7+07-7.00



**DETAIL #1
NORTH OUTFALL**
Scale: 1"=40'



**DETAIL #2
SOUTH OUTFALL**
Scale: 1"=40'

* NOTE: SLOTS PROVIDED FOR INITIAL SITE DEVELOPMENT SHALL BE FILLED WHEN ADJACENT LOTS ARE FILLED AND DEVELOPED

PROJ.: 02-113	DATE: 5/28/02
CADD TECH.:	C.M.
PROJ. MGR.:	Bill Edwards, P.E.
FL. REG. NUM.:	#38615

DATE	BY	REVISION DESCRIPTION
12/6/02	BE	P.R.T. COMMENTS
1/16/03	CM	S.F.M.D. COMMENTS
1/17/03	BE	RECORD DRAWINGS PER CONTRACTOR MARK-UPS
3/22/04	BE	RECORD DRAWINGS PER CONTRACTOR MARK-UPS
8/27/04	BE	6" PERIMETER WALL (BY OTHERS)

AVALON ENGINEERING, INC.
2503 DEL PRADO BLVD. #200
CAPE CORAL, FLORIDA 33904
FBPE #3128 (239) 573-2077

DEVELOPER
PALMETTO PINE DEVELOPMENT, LLC.
1386 CAPE CORAL PARKWAY
CAPE CORAL, FLORIDA 33904

PALMETTO PINES OF CAPE CORAL
PORTION OF TRACT "A" - LOTS 8 & 9
BLOCK 4397 - UNIT 63
CAPE CORAL, FLORIDA

STRUCTURE TABLE AND DETAILS